

16 APR  
-  
30 MAY  
2024



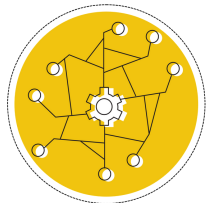
UNITED  
EDGE

# THE JUSTICE BASED APPROACH: FOUNDATION COURSE

# JUSTICE BASED APPROACH

The Justice Based Approach is a lens that refocuses our actions and decisions on models that dismantle unjust systems and hold power to account in order to shift the planet towards social and environmental justice.

If we really want justice in our projects and actions, we need to consider all five pillars of the Justice Based Approach thoroughly.



## RADICAL SYSTEMS

We take a systems approach to solving problems and work to make radical systems commonplace.



## LIVING DEMOCRACY

We empower individuals and groups to participate in the decisions that affect them, provide tools to increase access to good information, and support the right structures to make those decisions.



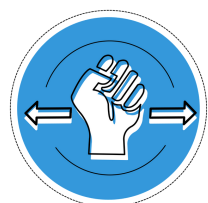
## EVERYDAY ACTIVISM

We believe that change makers need to build their own resilience and awareness to help others become more active. We share lessons from across the spectrum of social change movements and support others to build their capacity to learn and take action.



## ALTERNATIVE MODELS

We help shift the paradigms of change makers to recognize failing approaches, pilot power-shifting projects, and cultivate alternative models for lasting change.



## BRAVE ACCOUNTABILITY

We strive for global justice and an end to impunity and believe in the power of individuals, groups and movements to shift the power of privilege and unite to hold power to account.



Download our free Justice Toolkit: [www.unitededge.net/justice-toolkit](http://www.unitededge.net/justice-toolkit)



# THE REASON

We've been destroying our world and its people for generations. The solutions we have been using are no longer enough. We have to do better, and we must act now.

The Justice Based Approach will revolutionize the way you work on humanitarian, development, social change, and environmental justice initiatives in ways that will impact both your work and your life.

As we face a time of intense and rapid change, we must create space to step back and consider some of the most pressing issues facing the world. This course will explore new approaches, real-life examples, tools, and perspectives that will re-energize you with new knowledge and skills, as well as renewed hope and direction.



## CRITICAL THINKING

You will develop the skills to think critically about the systematic challenges facing our sector and wider society and your role in solving them.



## LEADERSHIP FOR IMPACT

You will develop as a leader and become more effective in bringing about positive change and lasting impact.



## TRANSFORMATIVE PROGRAMMING

You will develop your ability to ask tough questions and utilize tools that will transform the way you design programmes, lead teams and live your life.

This course is participatory, innovative and proven to be incredibly impactful.

# THE ESSENTIALS

**Course length:** 7 weeks

**Time commitment:** 6-7 hours per week, except first week

**Week 1. Live session:** 2 hours, for orientation

**Weeks 2 - 4. Live sessions:** 6 hours per week, every Tues & Thur for 3 hours each

**Self-guided:** up to 1 hour per week

**Optional sessions:** Mon for networking and Fri for reflection

**Price:** \$595 USD per person

\$535 USD per person for groups of 10+

**Language:** English

**Delivery methods:** Live participatory online sessions | Interactive online learning tools | Small team discussions | Online forum | 1-2-1 with Facilitators | Self-led learning and reflection | Facilitator Q&As | 10+ optional group events such as networking, film screenings, and panel discussions

**Next course dates:** 16 Apr - 30 May 2024

**Enrollment deadline:** 19 Apr 2024 while spaces are available

**More information:** [www.unitededge.net/jba-foundation](http://www.unitededge.net/jba-foundation)

**Booking form:** <https://united-edge.typeform.com/to/DabuyH>

***Join the global movement  
for more effective and  
radical change through this  
vital course on social and  
environmental justice.***

Over **1,700** people  
have completed  
this course  
from more than  
**500** organisations

# THE COURSE

With the Justice Based Approach, we reflect on why -- after 25 years of rights-based approaches -- inequality, environmental destruction, oppression, and impunity are bigger challenges than ever before. We will critically challenge and explore many assumptions about methodology and practice in the following areas:

- All Five Pillars of the Justice Based Approach
- Power and oppression
- Strategic and personal leadership
- Effective programme design
- Development theory and history
- Evidence-based decision-making
- Participatory approaches
- System analysis
- Localization and decolonizing aid
- Rights-based programming
- Monitoring and evaluation for learning
- Ethical programming and accountability
- Climate and gender mainstreaming

We will also explore a number of innovative and exciting alternative approaches to social and environmental change that you can apply to your work.

The course will challenge you, inspire you and give you the tools to support communities and partners to lead change that is truly transformative.



“

**If you've ever questioned current development models or your place within them, or better yet if you haven't questioned any of that, this will be a superb way to crack open your underlying assumptions and get you thinking of how you really want to approach your work in a comprehensive way.**

Independent Participant, Vietnam

”

# THE SCHEDULE

The course starts the week of 15 April and ends by 30 May 2024. Core live sessions take place on Tuesdays and Thursdays.

All Tuesday and Thursday sessions start during the morning for Africa and Europe, late morning for the Middle East, mid-day for South Asia, the afternoon for Southeast Asia, and the early evening for the Pacific and Australia.

If you are in the Americas, sessions will take place during the day.

Each week includes six hours of live sessions, with many additional optional sessions to choose from throughout the week.



**Orientation Week** (week of 15 April): Meet our team of facilitators for an introduction to the course, meet other participants and familiarize yourself with the online platform ahead of the course starting.



**Justice Week** (week of 22 April): Explore the current status of rights and justice, a history of approaches to development work and rights, and how to make our work more transformative.



**Action Week** (week of 29 April): Explore the hidden impact of our work, how individuals, projects, and organisations can better align to justice, and how power is central to positive change.



**Systems Week** (week of 6 May): Look at the role of systems in creating injustice and how systems of oppression must be addressed through our work - including a much deeper understanding of identity and privilege.



**Decisions Week** (week of 13 May): Understanding what shifting power really means by analyzing how and where decision-making is taking place and how we can embed these lessons into the design of our programmes.



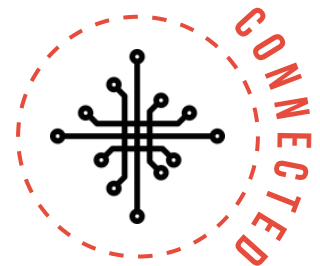
**Models Week** (week of 20 May): Analyzing the solutions that exist for social or environmental change and how we can discover and leverage alternative models that are more holistic, innovative and power-shifting.



**Accountability Week** (week of 27 May): Explore the role of accountability in creating justice and how brave accountability can transform our impact as organisations and individuals.

# THE APPROACH

Our style of online delivery creates genuine human connection, facilitates deeply reflective and thoughtful discussions, and leads to real impact and effectiveness.



The course uses mixed methodologies, including participatory live sessions, interactive online tools, movement, games, small group discussions, an online forum, and self-led learning and reflection. Our facilitators run Q&A sessions, and you have the opportunity to book one-to-one calls with them throughout the course.

Our courses attract participants from around the world, which creates a unique learning and sharing environment. Reflecting on justice from a local and global level will vastly expand your network and generate rich and valuable discussions.



We take great care to create a safe and welcoming space for all course participants. We are committed to making reasonable adjustments to ensure that anyone with an additional need is able to participate. Additional needs and access requirements can refer to physical, mental, emotional, or other conditions. These might include emotional triggers and 'invisible' diseases, conditions, impairments, or disabilities. Our Inclusion Lead will discuss this with you before the course and ensure that you are comfortable and you feel supported throughout.



# MEET YOUR FACILITATORS

This course is designed and facilitated by United Edge Co-Founders, Daniel Bevan and Matt Kletzing. With combined experience of more than 30 years in the humanitarian, development and human rights sectors, they bring to the course a wealth of hands on experience and expert facilitation skills.



DANIEL BEVAN

Daniel specializes in participatory approaches, client-led programming, capacity building, training, and monitoring and evaluation. He is deeply passionate about systemic change, social justice and critical thinking. Daniel has worked with partners as varied as governments, child and youth groups, the UN, academic institutions, activists, INGOs and affected communities. He is a strong advocate for exploring alternative models to development and is particularly interested in alternative economics and shared ownership initiatives, as well as radical conservation and rewilding.



MATT KLETZING

Matt specializes in facilitating cooperation and partnership between change makers as well as strategy development, learning and accountability. Matt has a varied social science research background and drive for impactful communication. He has supported the work of numerous social change organisations, from grassroots community groups to large networks of the world's leading humanitarian agencies. He is passionate about humanitarian action, progressive policy making, financing reform and innovation, as well as vegan living.



TEAM LEADERS

Our Facilitators are joined by a global group of Team Leaders, all of whom have completed the course previously and are experts in their field. They support small groups during the course to explore the themes in more depth during team discussions.



# THE PARTICIPANTS

The course is for every humanitarian, development, social change, or environmental justice worker. It's for organisations and individuals, governments, activists, businesses, unions, leaders, thinkers, doers – anyone working for change.

A highlight of the course for many participants is the opportunity to connect with and learn from people from across the world. Our last round of courses had participants from over 70 countries!

We welcome participants from all levels of organisations and from diverse departments to the course, which creates a rich mix of experience and perspectives. We encourage senior staff to join the course with their teams. The course will be conducted in English.

Our 1,700+ course participants have come from a wide variety of organisations -- from international NGOs (52%) and national NGOs (25%) to UN agencies, government officials, foundations, donors, and independent activists and consultants. They work to alleviate poverty, respond to humanitarian crises, advocate for human rights, protect the environment, develop health and education, empower young people, women, indigenous communities, differently-abled people, and other marginalized groups -- basically from every sphere of humanitarian, development, social change and environmental justice work.

Here are just some of the 500+ organisations that have completed the course:



# TESTIMONIALS

We have received many stories from past participants about the enormous impact this training has had on their work and lives. Here are just a few of them.

“ It is the best training I have ever had! It helped me think differently, opened my perspective, and [taught] a new way of doing development work! ”  
Participant World Vision, Cambodia

“ A must-attend if one wants to be more effective, efficient, just, humane and simply better and smarter. ”  
Participant from Humanitarian Leadership Academy, Philippines

“ [The course] was really interactive and delivered with so much energy and passion. ”  
Participant from Restless Development, UK

“ It will open your mind to ideas you never realized you could have. ”  
Participant from WWF, Malaysia

“ It's a different frame of thinking about perennial issues that puts people at the centre of any action. ”  
Participant from UN OCHA Myanmar

“ Justice based approach training is completely different than [any other] contemporary training, and it is a must-do training. ”  
Participant from UNFPA, Bangladesh

“ The training was the best motivation - and energy-boost - I had in my professional career. ”  
Participant from GIZ, Cambodia

“ It is awesome and vision changing for professionals who want to think and work differently. ”  
Participant from Oxfam, India

“ I would strongly recommend this training, not just to those starting out their careers in development/social work, but perhaps even more so for those who have been in the line for so long that they stop asking questions and challenging themselves. ”  
Participant from WWF, Malaysia

To hear more from past participants, visit [www.unitededge.net/testimonials](http://www.unitededge.net/testimonials)



# THE PRICE

**STANDARD RATE**  
PER PERSON

**\$595**  
**USD**

**\$535**  
**USD**

**GROUP RATE**  
PER PERSON

## The course fee includes:

- 36 hours of live facilitated learning led by highly experienced facilitators with decades of combined experience in this field
- An orientation session to build confidence and skills in remote learning approaches
- Access to 10+ exclusive optional events throughout the duration of the course
- One-to-one discussions with course facilitators
- Ongoing small-team discussions and team events
- Daily emails with learning, reflection, and action suggestions based on each week's content
- Exclusive access to a JBA Foundation Course forum where participants can share and learn from one another
- Justice Based Approach Resource Pack, containing notes from every session and a pre-prepared presentation so that you can hold a sharing session back with your colleagues
- Justice Based Approach Toolkit to help you reflect on your own work and embed the lessons from the course
- Ongoing access to our online community of social change makers, including frequent resource sharing and direct links to regular learning events for ongoing professional development
- A certificate to verify your course completion and increase your job prospects
- Exclusive opportunity to join the Advanced Course on the Justice Based Approach and become a United Edge Associate

**Financial  
assistance  
available**



# THE PRICE

## GROUP RATE: \$535 USD per person

Receive 10% off when you book 10 or more places on a course.

Group attendance is a wonderful way to learn and develop together as a team and organization.

Groups can be from multiple organizations if they book the course together. Donors and organizations have used this as an opportunity to support partners and whole teams to attend together.



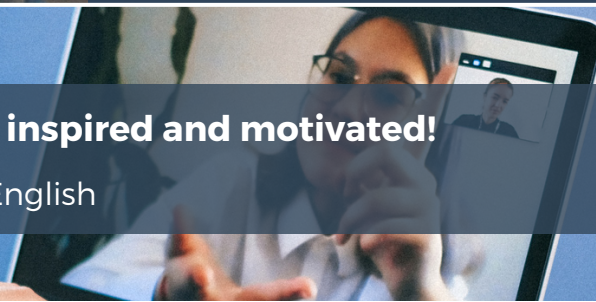
## FINANCIAL ASSISTANCE

We proudly offer financial assistance to help cover part of the course fee for people who may otherwise find it difficult to fund such a course. Since 2017, we have provided over \$100,000 worth of financial assistance to course participants, ensuring that grassroots and local organizations with limited funds but big aspirations can develop their work for greater impact and positive social change.

We prioritize support for those from the majority world, women, black and indigenous people, those from ethnic minorities, LGBTQIA+ people, young people, disabled people, refugees, and grassroots activists. To apply for financial assistance, please contact us.

**I always finished the sessions inspired and motivated!**

Fiona Locke | Founder | Birdsong English



# THE IMPACT



UNITED EDGE HAS  
TRAINED OVER 2,000  
PEOPLE FROM...



COUNTRIES



WOULD  
RECOMMEND OUR  
COURSES



ARE SATISFIED  
WITH CONTENT &  
FACILITATION



SEE THINGS IN A  
NEW WAY AFTER  
OUR COURSES



RATED OUR COURES  
EXCELLENT VALUE  
FOR MONEY



ALUMNI IN OUR GROWING ONLINE COMMUNITY, FORMING A  
LEARNING GROUP FOR ONGOING PROFESSIONAL AND  
PERSONAL DEVELOPMENT



**ACTIVISTS AT HEART**  
**HUMANITARIANS BY TRADE**  
**SOCIAL ENTREPRENEURS BY DESIGN**

United Edge is a social enterprise working with change makers to transform our broken systems with alternative models for global justice.

We are working towards a just world where people and the planet are prioritized over profit and short-term gains.

Everything we do is aimed at creating a more just world.



### **ACTIVISTS AT HEART**

We are everyday people who believe that each of us has a responsibility -- and the ability -- to make a difference. We partner with change makers around the world who are committed to global justice through changing systems, shifting power and better development. We add our voices to this vibrant movement because we passionately believe in the power of individuals and groups uniting to make change happen.

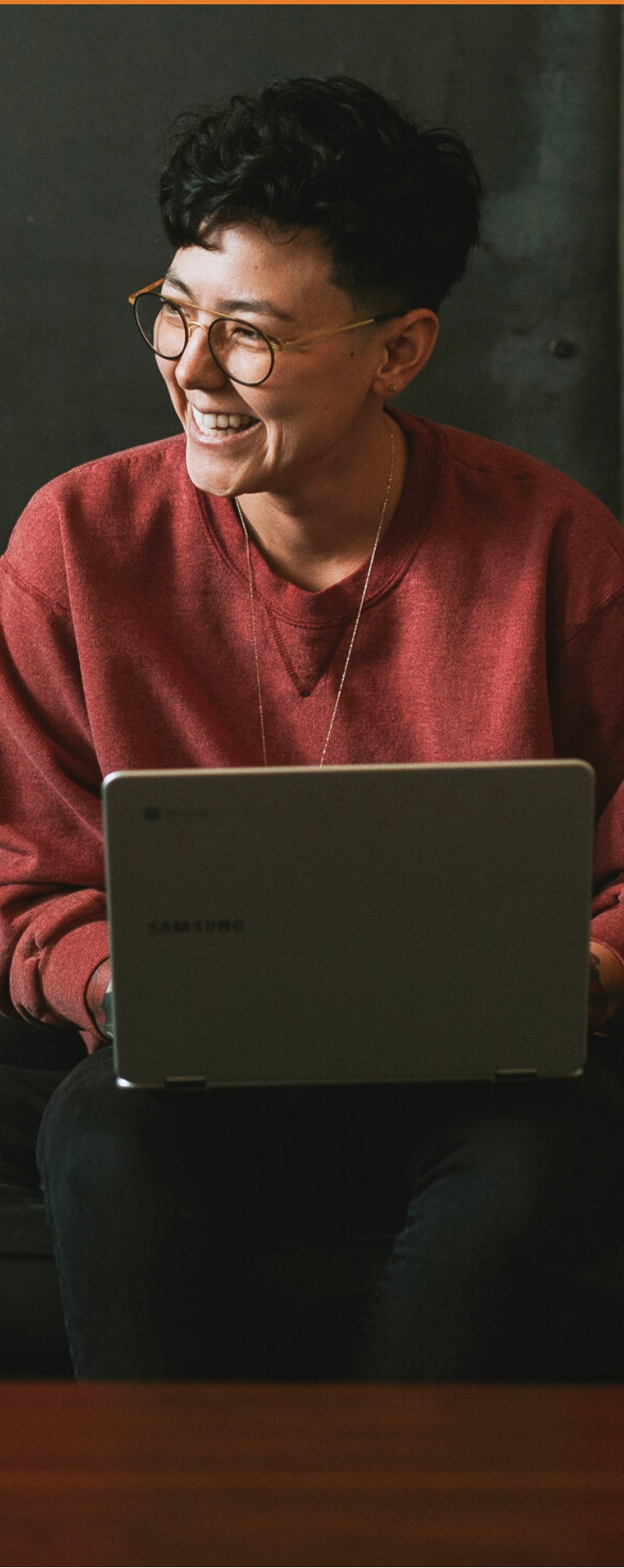
### **HUMANITARIANS BY TRADE**

We are experienced professionals with skills, expertise and insight to share. We have worked on human rights, community development and humanitarian projects for over 15 years across Africa, Asia, Europe, North America and the Middle East. Our time with communities and youth groups, local civil society and CBOs, national and international NGOs, large networks and the United Nations has helped us understand the challenges that change makers face.

### **ENTREPRENEURS BY DESIGN**

We are a social enterprise committed to piloting power-shifting projects and providing services to change makers everywhere. Instead of imposing our solutions, we want our services to be subject to demand. Power and privilege define the way social change is usually funded and put into practice. As a social enterprise, we fund all our work by its own means. Our independence means we can focus on delivery without compromising quality or ethics.

# BOOK YOUR PLACE



Places on the course are extremely limited and many of our courses get booked up quickly. Book early to avoid missing out.



**BOOK HERE**



Click the link above or visit [www.unitededge.net/jba-foundation](http://www.unitededge.net/jba-foundation)



Please read the terms and conditions, including the cancellation policy before booking.

If you have any further questions visit our FAQ page: [www.unitededge.net/faq](http://www.unitededge.net/faq)



Don't hesitate to get in touch: [info@unitededge.net](mailto:info@unitededge.net)



## **BRINGING THE COURSE TO YOU**

Please get in touch if you would like to discuss hosting an exclusive in-house course at your organisation.

We also offer other training, coaching and mentoring services, as well as consultancies for like-minded organisations. Find out more on our website.

# GOT ANY QUESTIONS?

---

We'd love to hear from you!

info@unitededge.net

www.unitededge.net/jba-foundation



Connect with us:

